



285 mm
270 mm
240 mm
210 mm
180 mm
150 mm
120 mm
90 mm
60 mm
30 mm
0

Model:
Color:
Special Request:

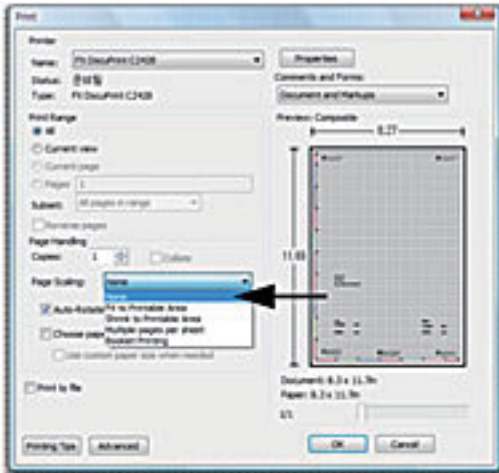
Left
Length: mm
Width: mm

Right
Length: mm
Width: mm



0 30 mm 60 mm 90 mm 120 mm 150 mm 180 mm 198 mm

HOW TO TRACE YOUR FEET FOR BONT SHOES

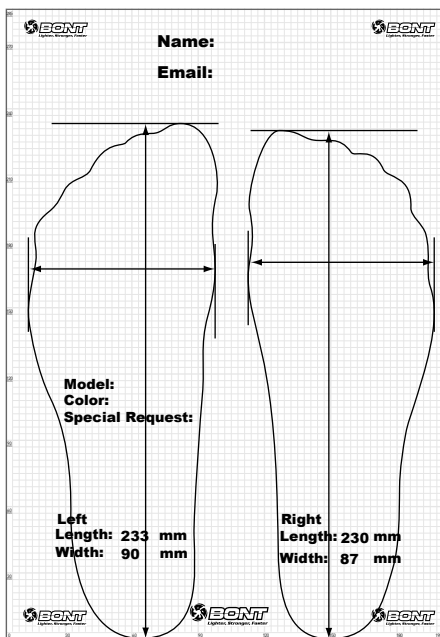


1. Please print out the BONT foot tracing grid paper from the link below. Make sure you click "NONE" for Page Scaling option. Otherwise the grid might not have the exact measurement. Use your ruler to check that the page has printed out in the right dimensions. If it's correct, go on to the next step.

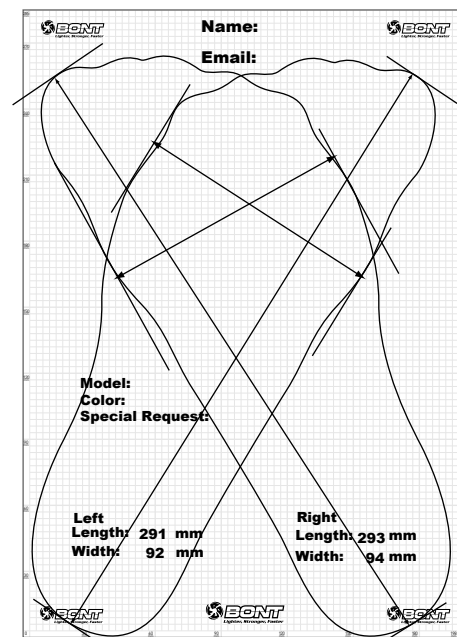
KEEP THE PEN STRAIGHT



2. Stand with your right bare foot placed either vertically straight if your foot can fit within the grid or diagonally across the paper if your foot is too large to fit on the paper. See below examples.



Example 1



Example 2

3. Hold a thin black pen in a vertical position and trace right around the foot. Do not try to make your feet bigger or smaller with the pen.
4. Remove that foot and replace with your left foot and trace it around in the same way.
5. Measure the length and width of both feet. Make sure you mark the longest point and show both ends of the line clearly by drawing little a vertical line for length and horizontal line for width with a ruler and put the precise measurement in mm unit on a marked area. Fax the tracing to BONT. Do not write anything on the edge of the paper as the fax can change the tracing in any way.
6. Write your name and contact details to avoid delays; the desired model and any other relevant information Bont should know.